

**DrayTek Sales Kit**

# Vigor2865 Series Firmware 4.2.0

**VDSL2 35b/ADSL2+ Dual-WAN VPN Router**



**Marketing, DrayTek Corp.**

**DrayTek Sales Kit**

# Vigor2865 Series Firmware 4.2.0

**VDSL2 35b/ADSL2+ Dual-WAN VPN Router**



**Marketing, DrayTek Corp.**

# VDSL2 35b/ADSL2+ Dual-WAN VPN Router

Vigor2865 Series



800 Mbps

Vigor2865



Vigor2862

1.6 x

Faster NAT Performance

300 Mbps

Vigor2865



Vigor2862

3.5 x

Faster IPsec Performance

130 Mbps

Vigor2865



Vigor2862

2.9 x

Faster SSL Performance

# Improved App QoS

Vigor2865 Series

## VoIP First

VoIP is always with top priority!  
With default UDP 5060 port (configurable), VoIP QoS is out-of-box ready.

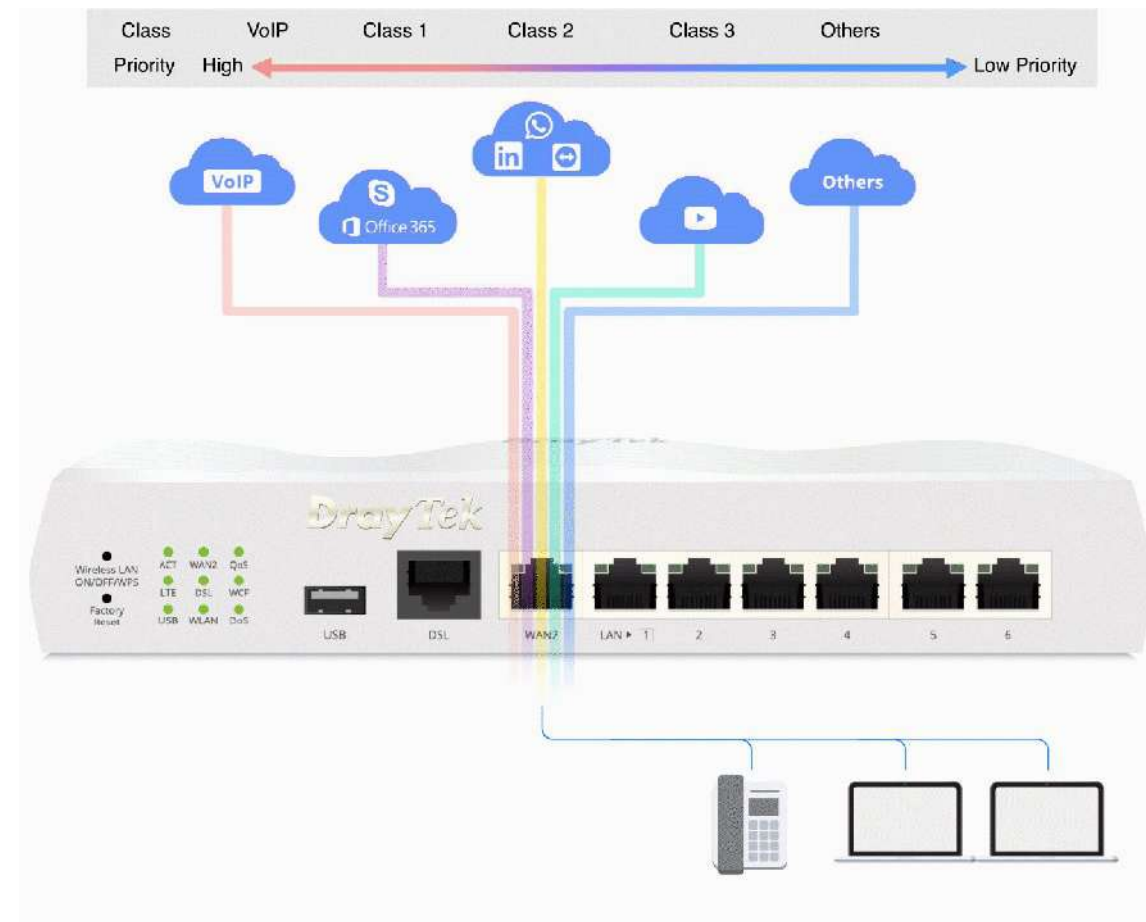
## Improve Experience for Business-Critical

### Apps

Select your business critical apps, and easily put them into QoS classes.

## Flexible Bandwidth Allocation

Bandwidth will be reserved for high-priority classes, and can be used by low-priority classes when available.



# Key Feature Hotspot Web Portal

Vigor2865 Series

Market your business while offering free Wi-Fi

## Wi-Fi Marketing

Redirect the hotspot guests to the company homepage, online surveys, or display promotion message.

## Grow Your Email List

Require the guest to leave contact info or social media accounts before they can use the Internet service.



## Various Authentication Type

A variety of login methods are supported to meet your business need, including Facebook Login, Google Login, SMS PIN, Voucher PIN, and RADIUS.

## 3rd-Party Service Compliant

Supports external captive portal authentication. You can keep using the Wi-Fi marketing solution you like.

## Quota Management

Bandwidth management is integrated into Hotspot to control the bandwidth and session usage of the Hotspot guests.

# Key Feature **Wi-Fi Roaming**

Vigor2865 Series

Solve the sticky client problem and improve Wi-Fi roaming experience.

## **Proactive Roaming**

Wi-Fi clients automatically hand-off to another AP/router with a better signal strength when moving around in an area with multiple APs/routers.

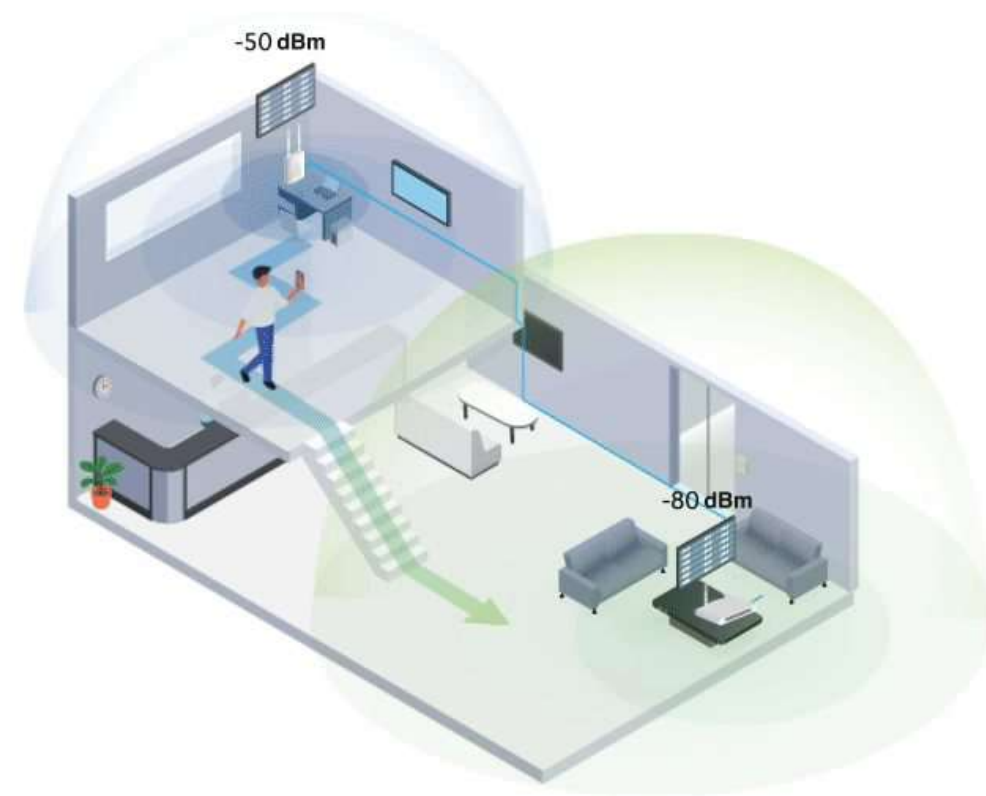
However, Wi-Fi clients sometimes stick to the AP/router with weak signal, and not switching to the one with better signal.

## **Assisted Roaming**

VigorRouter will disassociate the Wi-Fi clients who are out of the effective transmission range, forcing them to pick up another access point/router with a stronger signal.

## **Stronger Signal Guaranteed**

Furthermore, with "Minimum RSSI with Adjacent AP" option, VigorRouter can disassociate the client only when other AP/router has a stronger wireless signal, and keep client stayed when there's no other AP/router nearby.



# Key Feature **Central Management**

Vigor2865 Series

## LAN Management



Manage VigorSwitch

✓ 10 VigorSwitch

- Automatic Discovery
- Provisioning
- Monitoring
- Centralized Hierarchy View
- Reboot PoE Devices Remotely
- Quick VLAN Configuration



Manage VigorAP

✓ 20 VigorAP

- Automatic Discovery
- Automatic Provisioning
- Monitoring
- Centralized View
- Reboot VigorAP Remotely
- Wi-Fi Client Load Balancing

## Cloud Managed (Since ACS V2.5.2 & FW 4.0.5)



Via VigorACS2



- Provisioning
- Monitoring
- Centralized Hierarchy View
- Alarm
- Reboot Vigor Devices Remotely
- Scheduled Maintenance
- Report

# Key Feature LAN Management

Vigor2865 Series

An all-in-one management platform for Vigor devices on the LAN side.

## Automatic Device Discovery

Automatically discover LAN subnets and add detected VigorSwitch/AP into managed list.

## Provisioning

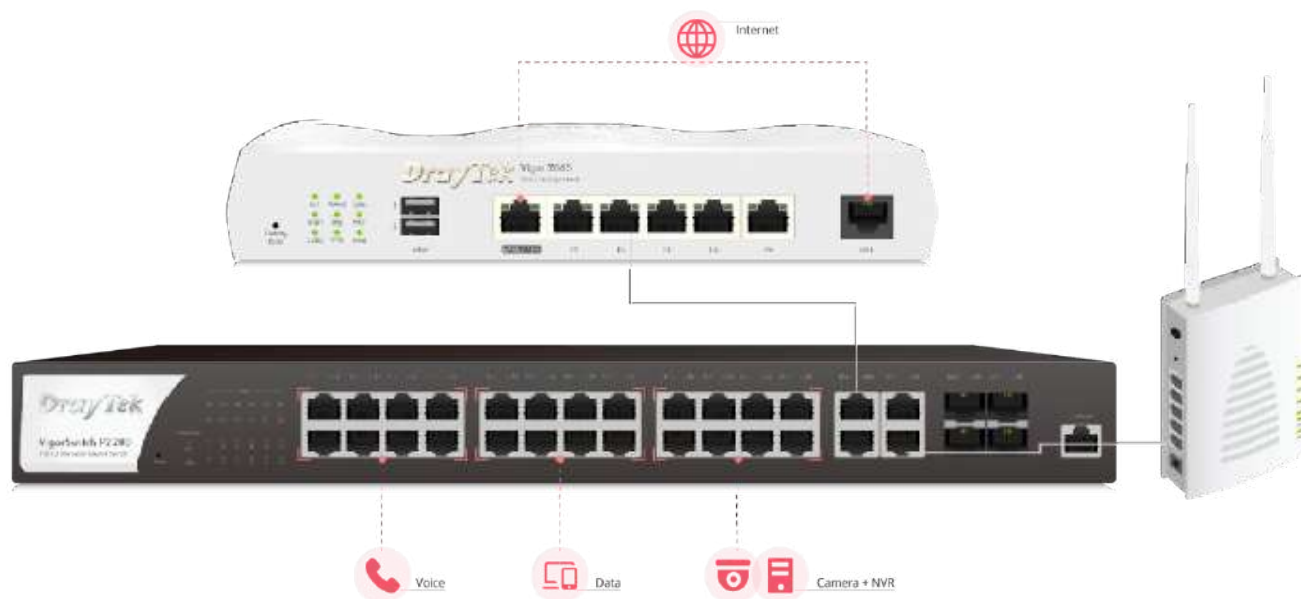
Most-frequent used settings can be pre-defined on the Vigor Router, and provision to the managed VigorSwitch/AP.

## Monitoring

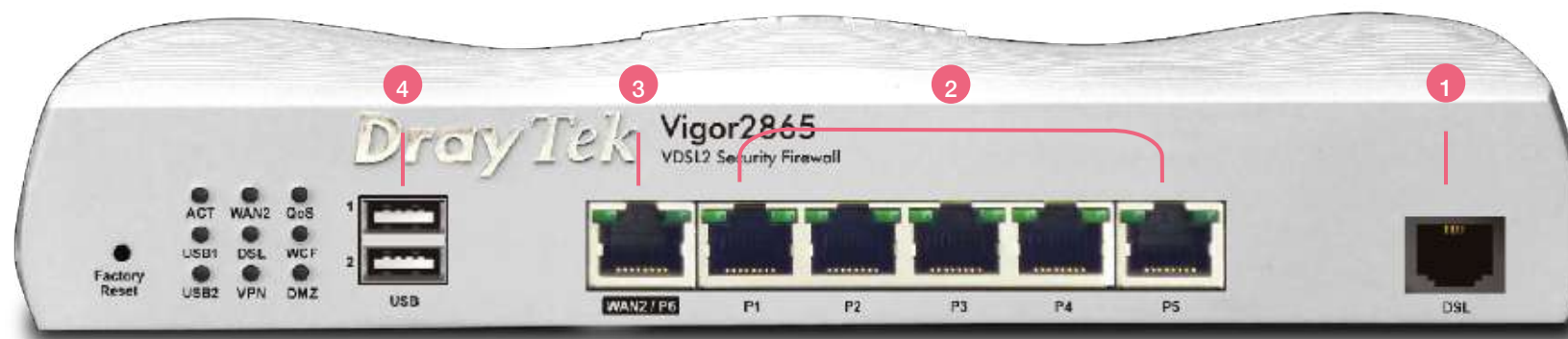
Vigor Router provides a centralized view of managing devices, you may always check if the managed Vigor Switch/AP is online.

## System Maintenance

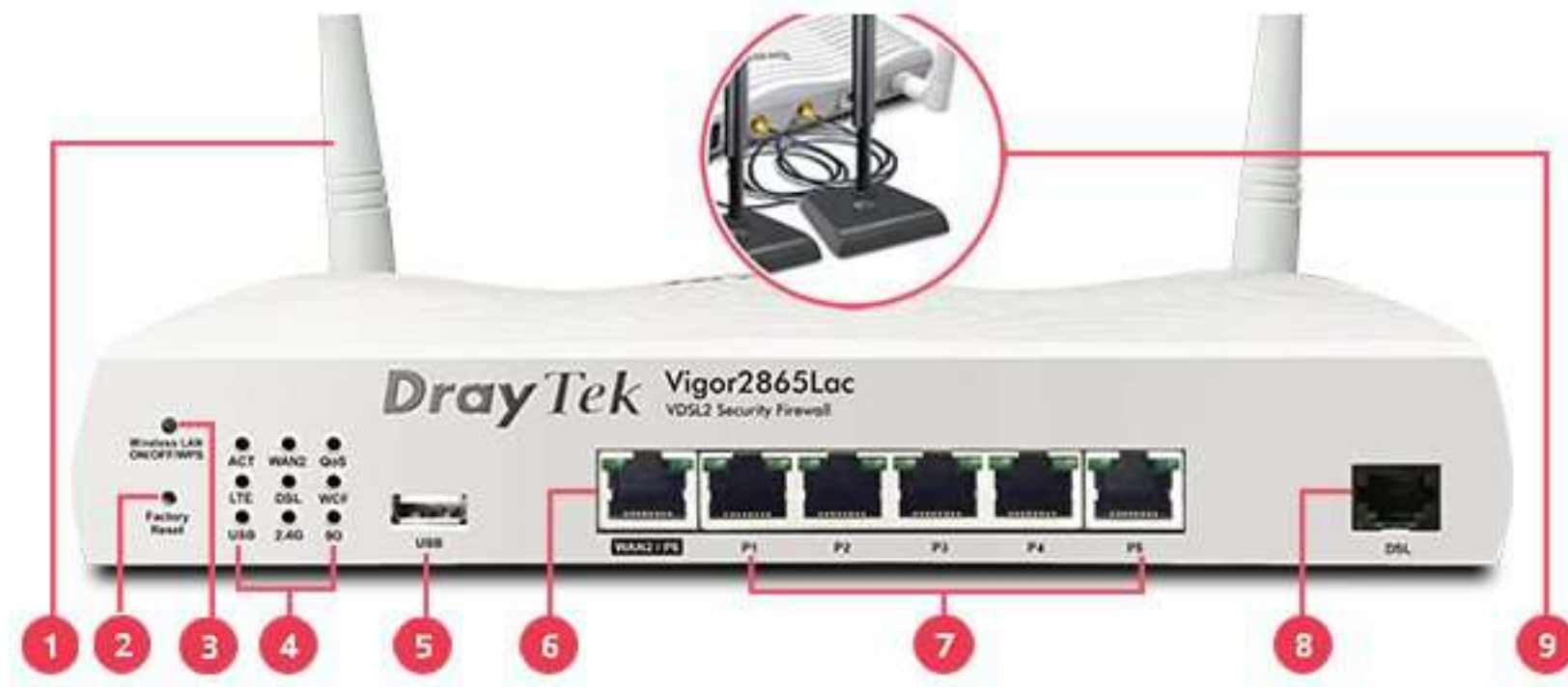
You may perform a factory reset, save/restore a configuration backup, or trigger a remote reboot directly on the Vigor Router. There's no need to log in to each device's management page.







<b>1</b> Fixed WAN Port	1 x RJ-11 (For <b>VDSL2 35b</b> /ADSL2+ WAN)
<b>2</b> Fixed LAN Port	5 x GbE 10/100/1000Base-T (RJ-45)
<b>3</b> Switchable WAN/LAN Port	1 x GbE 10/100/1000Base-T (RJ-45)
<b>4</b> USB Port	2 x USB2.0; 1 x USB3.0 for L model
NAT Throughput	800 Mbps
VPN	32 (IPsec throughput up to 300 Mbps)
Sessions	60k



- 1 Antenne sans fil (modèle WiFi)
- 2 Bouton Réinitialiser
- 3 Bouton WLAN/WPS (modèle sans fil)

- 4 4 LED indicateurs
- 5 USB 4G/Stockage
- 6 LAN/WAN Switchable Port: 1x GbE RJ-45

- 7 Port LAN fixe : 5x GbE RJ-45
- 8 Port WAN fixe : 1x RJ-11 pour 35b/VDSL2/ADSL2+
- 9 Module double SIM 3G/4G

# Vigor2865 Series

Vigor2865 Series

	2865	2865ac	2865Vac	2865L	2865Lac
Description	General Model	Wireless Model	VoIP with Wireless	LTE Model	LTE with Wireless
Fixed WAN	1 RJ-11 DSL WAN (Support VDSL2 35b)				
Switchable WAN/LAN	1 x GbE RJ-45				
Fixed LAN	5 x GbE RJ-45				
USB Port	2 x USB 2.0			1 x USB 3.0	
VoIP Gateway	✗		✓	✗	
Voice RJ-11	✗		2 x FXS port	✗	
LTE CAT.6	✗			✓	
SIM Slot	✗			2 x Micro SIM	
Antenna	✗	2 x Detachable dual-band antennas		2 x LTE Antennas	2 x Detachable dual-band + 2 x LTE Antennas
WLAN	✗	2.4 GHz: 802.11b/g/n; 5 GHz: 802.11 a/n/ac Wave 2		✗	2.4 GHz: 802.11b/g/n 5 GHz: 802.11 a/n/ac Wave 2
Max. Link Rate	✗	2.4 GHz: 400 Mbps; 5 GHz: 867 Mbps		✗	2.4 GHz: 400 Mbps 5 GHz: 867 Mbps

# SMB x VDSL VPN Router

Vigor2865 Series

	Vigor2865 Series 	Vigor2862 Series 	Vigor2860 Series 
Fixed WAN Port	1 x RJ-11 (for VDSL2 35b/ADSL2+)	1 x RJ-11 (for VDSL2 30a/ADSL2+)	1 x RJ-11 (for VDSL2 30a/ADSL2+) + 1 x GbE RJ-45
Fixed LAN Port	5 x GbE RJ-45	4 x GbE RJ-45	6 x GbE RJ-45
Switchable WAN/LAN Port	1 x GbE RJ-45	1 x GbE RJ-45	×
USB Port	2 x USB2.0 (1 x USB3.0 for L model)	2 x USB2.0	2 x USB2.0
SIM Slot	2 x Standard-Sized (LTE model)	1 x Standard-Sized (LTE model)	×
NAT Throughput	800 Mbps	500 Mbps	300 Mbps
IPsec VPN Performance	300 Mbps	85 Mbps	70 Mbps
SSL VPN Performance	130 Mbps	45 Mbps	35 Mbps
Max. Number of NAT Sessions	60k	50k	50k
Max. concurrent VPN Tunnels	32	32	32

	Vigor2865 Series	Vigor2862 Series	Vigor2860 Series
			
Dual-band Antenna (n/ac model)	2 for ac model	2 for n model; 4 for ac model	2 for n model; 3 for ac model
2.4G WLAN (n/ac model)	802.11 b/g/n	802.11 b/g/n	802.11 b/g/n
2.4G WLAN Max. Link Rate	400 Mbps	300 Mbps	300 Mbps
5G WLAN (ac model)	802.11 a/n/ac Wave 2	802.11 a/n/ac Wave2	802.11 a/n/ac
5G WLAN Max. Link Rate	867 Mbps (2x2)	1.7 Gbps (4x4)	1.3 Gbps (3x3)
DrayDDNS	✓	✓	✓
Bandwidth Management	✓	✓	✓
Content Filtering	✓	✓	✓
Hotspot Web Portal	✓	✓	✓
Managed via VigorACS2	✓ Since ACS 2.5.2; FW 4.0.5	✓ Since ACS 2.5.0; FW 3.8.9	✓ Since ACS 2.5.0; FW 3.8.9.2